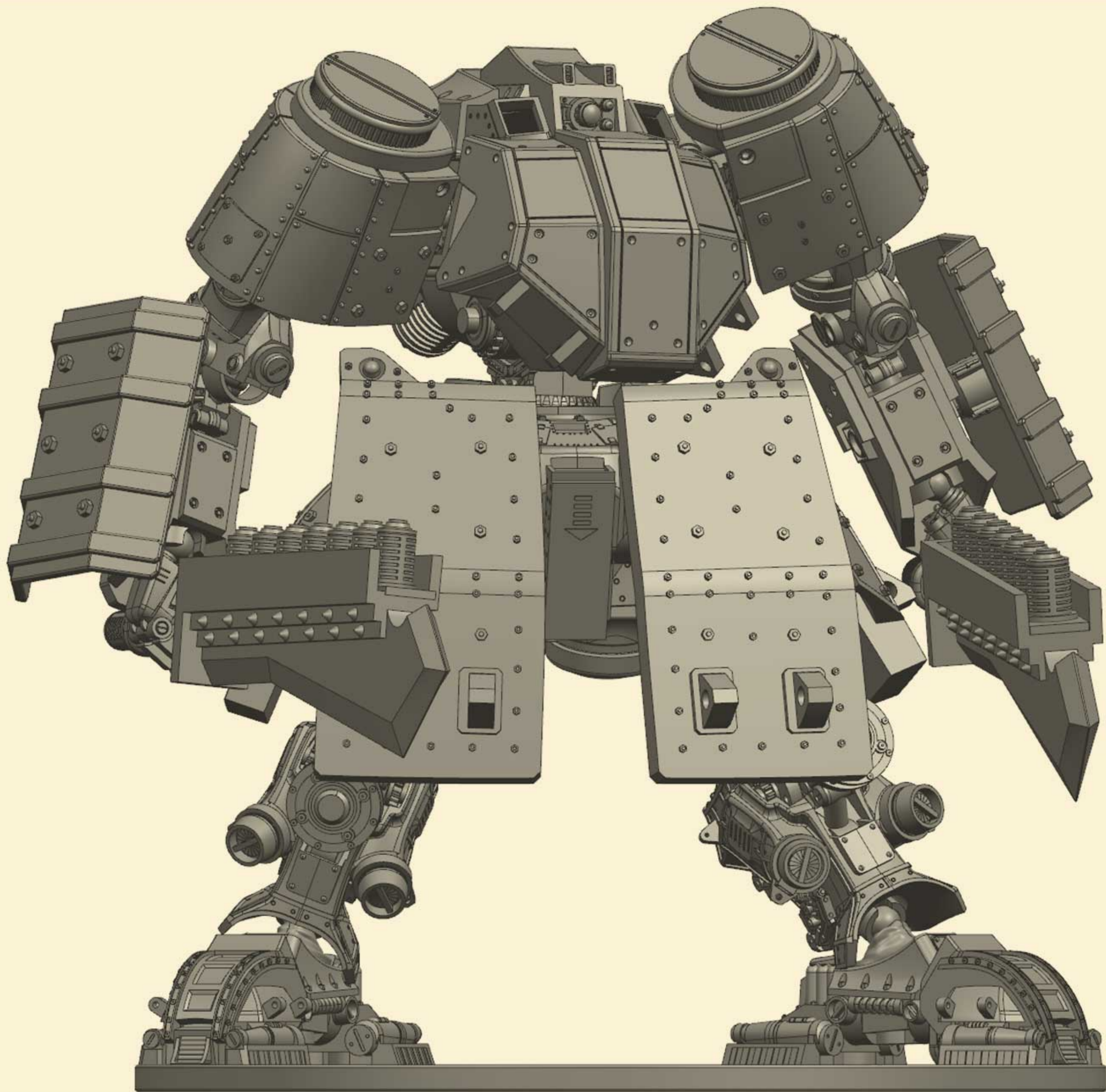


# IJN STEEL SAMURAI

## -ASSEMBLY INSTRUCTIONS-



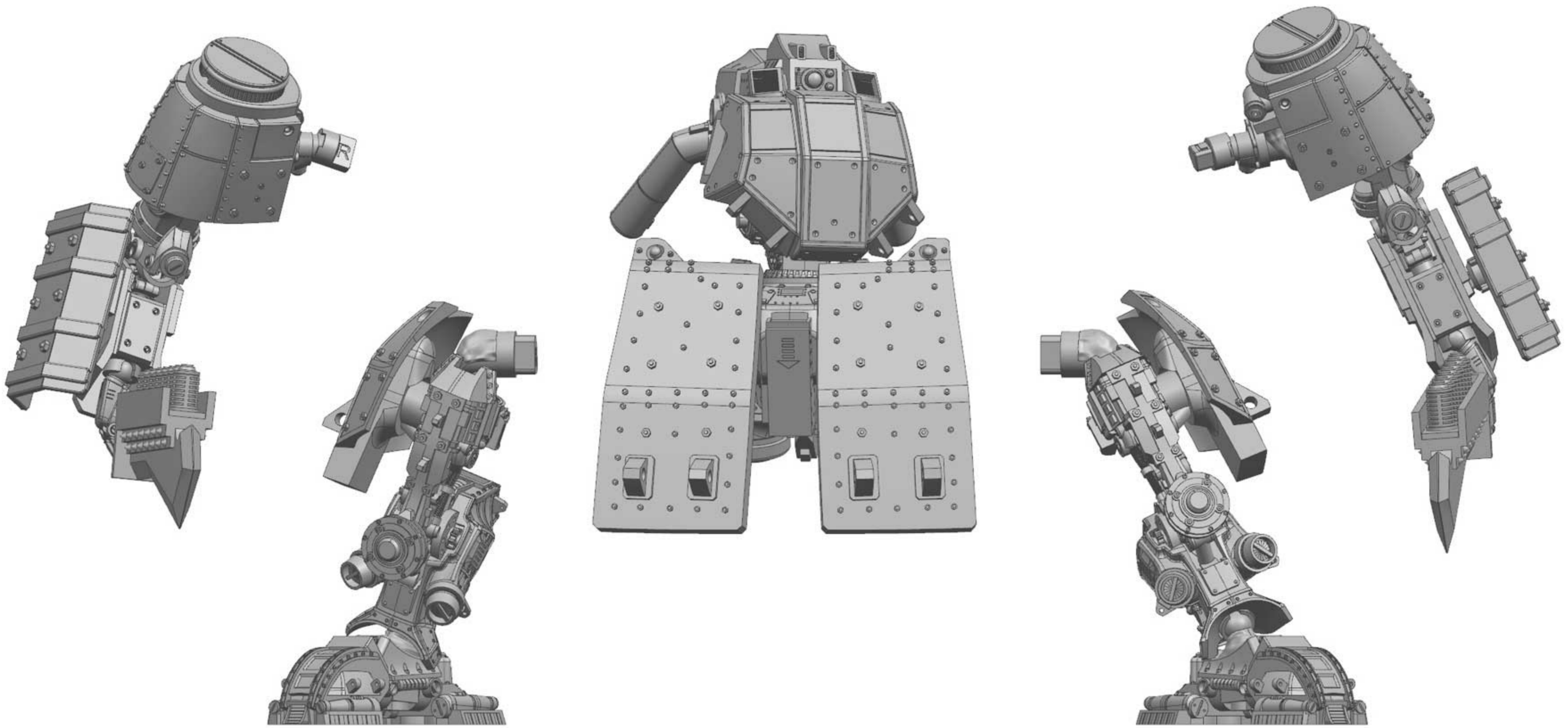
REMEMBER TO  
DRY-FIT  
YOUR PARTS  
BEFORE USING  
ANY GLUE.



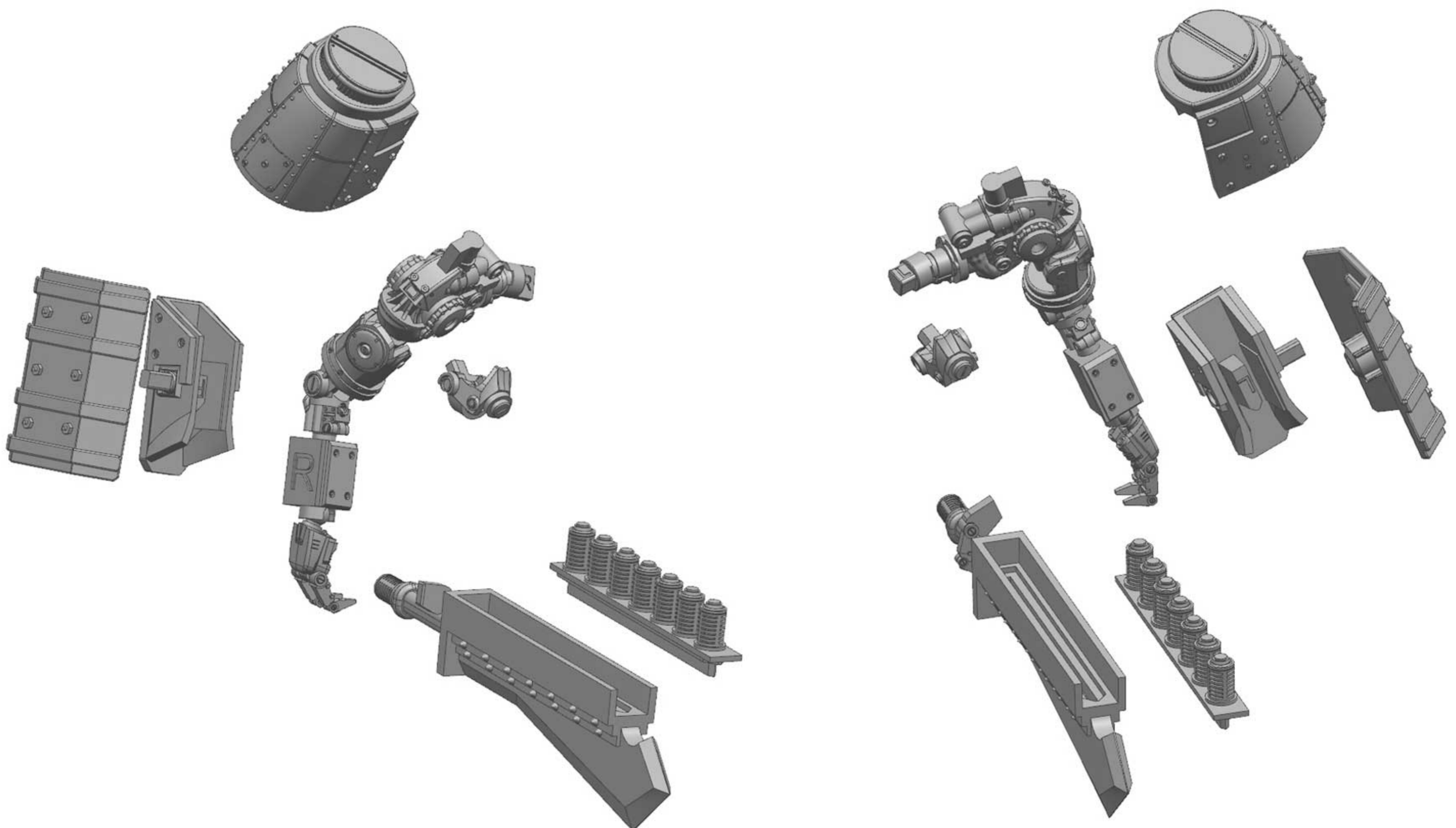
ITEM N.  
K-JP122R



# GENERAL ASSEMBLY

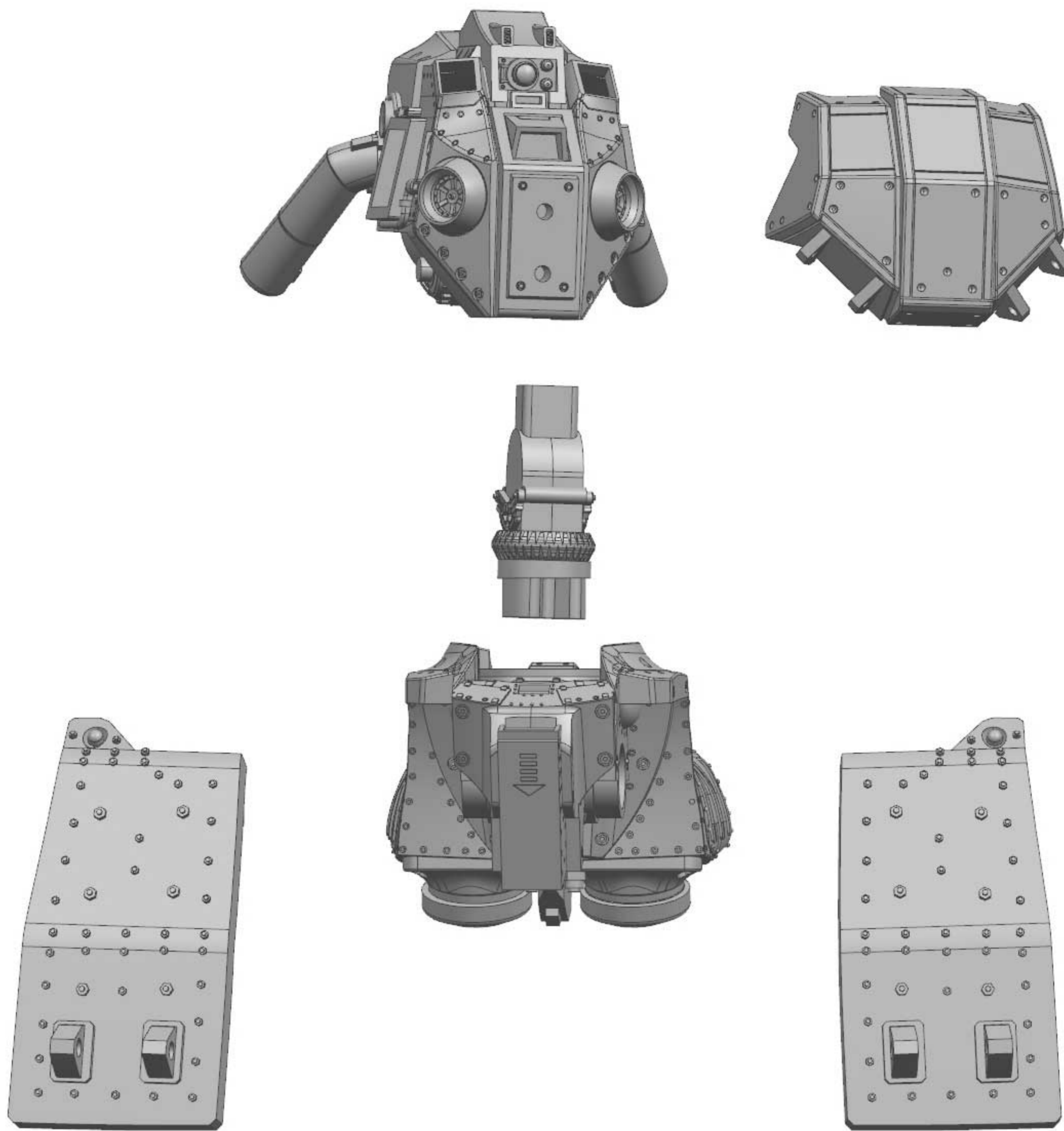


# ARMS AND SWODRS





# CHEST AND HIPS



# LEGS AND FEET

